



EAXeVB/AH

XLPE/PVC aluminium energy cable, longitudinally waterproof

LOW VOLTAGE CABLES 0,6/1 kV

Power distribution cables in power stations, industrial installations and switchgears, as well as in local mains. For fixed installation underground, in interior premises, cable ducts, in the open air, in water – as permitted by the local building regulations – if no risk of any mechanical damage is to be expected.



TECHNICAL DATA



Standard
HD 603.5A
NBN HD 603
TST 03 Ed. 04.2024



Certificate
EZÚ Czech Republic



Test Voltage
core/core 4 kV / 50 Hz



Rated Voltage
0,6/1 kV



Bending radius (min.)
15 x Ø of cable



Fire properties
EN 60332-1-2: self-extinguishing
CPR Classification: Eca

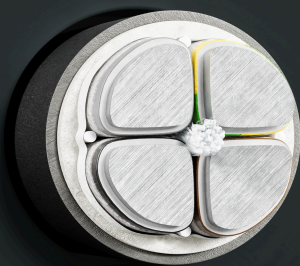


Core identification
HD 308 S2



Temperature range
Laying temperature: min. -5°C
Operating temperature: -20°C up to 80°C
Conductor temperature: max. 90°C
Short circuit temperature: max. 250°C

DESIGN



- 1 Aluminium conductor, round solid (RE), sector-shaped solid (SE), resp. sector-shaped stranded (SM)
- 2 Core insulation (XLPE)
- 3 Inner protective covering (water-blocking tape and threads)
- 4 Inner covering (EPDM with separation powder)
- 5 Sheath (PVC black, UV-resistant)

Number of cores x nominal cross-section (mm ²)	Current rating in the earth (A)	Current rating in the air (A)	Outer diameter appr. (mm)	Total weight appr. (kg/km)
4 x 50 RE	158	149	33.5	1325
4 x 95 SE	234	234	38.2	1997
4 x 150 SE	300	311	45.9	2891
4 x 150 SM	300	311	48.9	3082
4 x 240 SM	398	427	60.5	4720

CONTACT PERSON

Vojtěch Cuřin
 Product Supervisor
 +420 731 226 023
 vojtech.curin@prakab.com

